

Get Ready for the Lesson

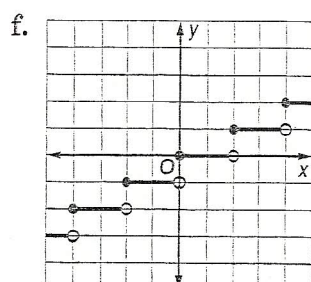
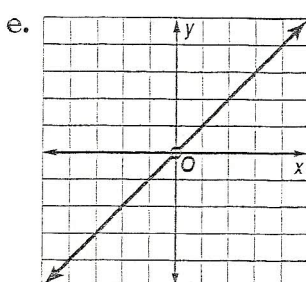
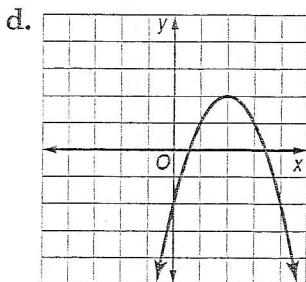
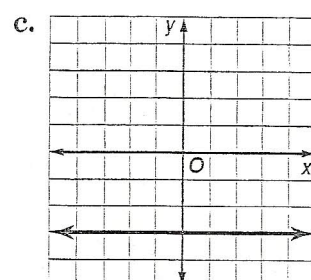
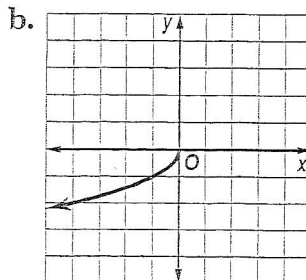
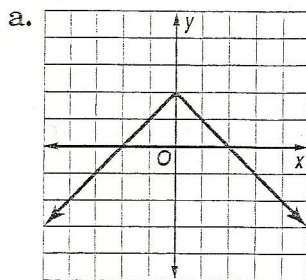
Read the introduction to Lesson 8-5 in your textbook.

- Based on the graph, estimate the weight on Mars of a child who weighs 40 pounds on Earth.
- Although the graph does not extend far enough to the right to read it directly from the graph, use the weight you found above and your knowledge that this graph represents direct variation to estimate the weight on Mars of a woman who weighs 120 pounds on Earth.

Read the Lesson

1. Match each graph below with the type of function it represents. Some types may be used more than once and others not at all.

- I. square root II. quadratic III. absolute value IV. rational
 V. greatest integer VI. constant VII. identity



Remember What You Learned

2. How can the symbolic definition of absolute value that you learned in Lesson 1-4 help you to remember the graph of the function $f(x) = |x|$?