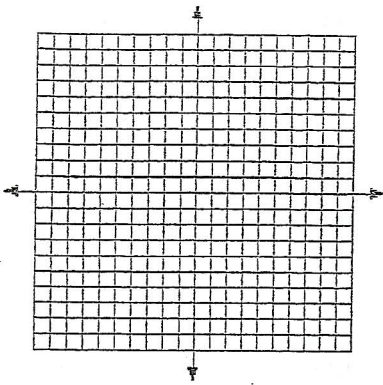


5. $y = 4^x - 5$



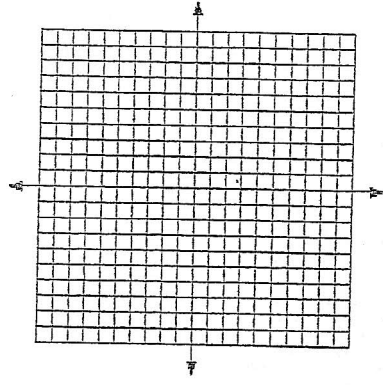
State the x-intercept.

State the y-intercept.

State the intervals the function is increasing and decreasing.

Identify the functions as linear, quadratic or exponential.

6. $y = -3^x$

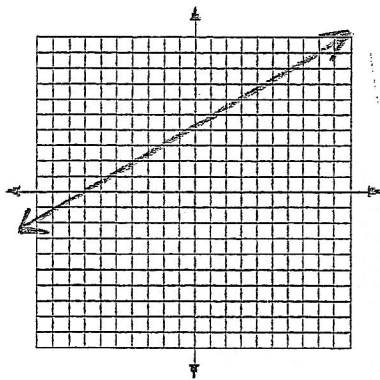


State the x-intercept.

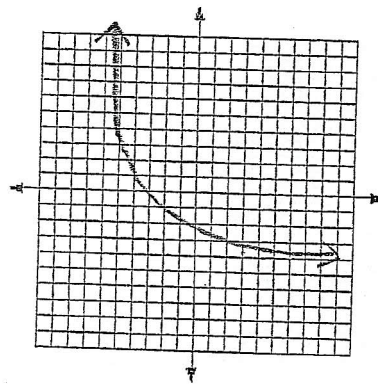
State the y-intercept.

State the intervals the function is increasing and decreasing.

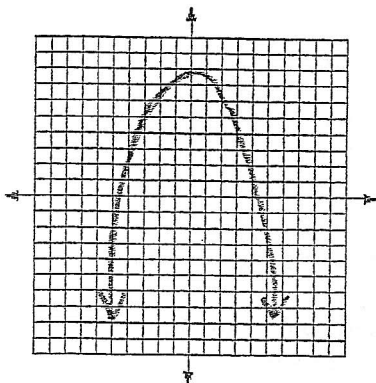
7.



8.



9.



10.

